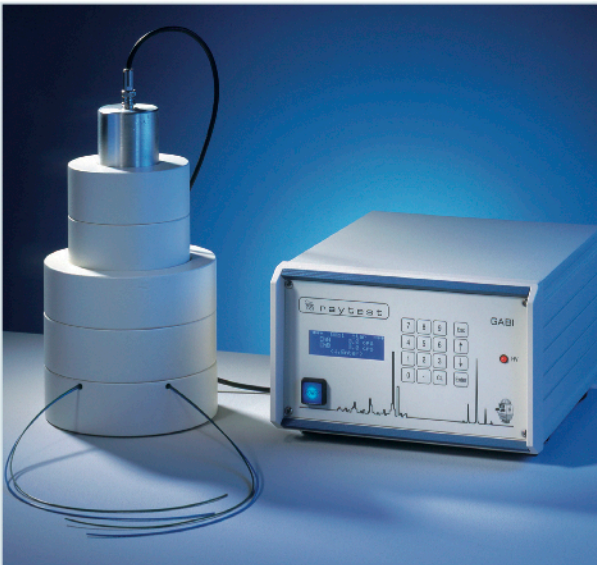


GABI

analog output radioactivity-HPLC-flow-monitor



y-Radiochromatography



Applications

y	radioactivity HPLC
	10 – 60 keV, 1x1" NaI(Tl)
	60 – 600 keV, 2x2" NaI(Tl)
	600 – 1300 keV, 3x3" NaI(Tl)

General description

GABI is the latest technology μ -processor controlled gamma spectrometer with built in digital ratemeter. GABI is assembled by modules of 19" format, which make modification and service support very fast and easy. GABI stand alone unit offers a keyboard and liquid crystal display for parameter dialog, entry and result presentation.

GABI has high voltage unit for manual or automatic selection of the required detector operation. Inserting a suitable calibration source and running the automatic calibration program, GABI is setting all parameters to a calibrated energy scale. Recalibration for compensation of any drift is quite easy, fast and full automatic.

GABI has 2 simultaneous counting channels with each 2 individually selectable energy thresholds each for setting an individual counting window for a particular nuclide. GABI is counting the radiation events in an energy channel per selected interval time.

The information of counts per time is transferred to a ratemeter, which converts the digital format to an analog output format of 0 – 1V. Individual parameters of the ratemeter can be selected and entered by LCD and keyboard. The output signal 0 – 1V of GABI can be easily adapted to the required chromatography conditions. GABI has an extremely high dynamic range from 0 – 500.000 c/s.

Features

- automatic energy calibration
- 2 simultaneous counting channels
- free threshold settings
- extremely high dynamic range 0 – 500.000 c/s
- LCD 4 lines, 20 characters each
- keyboard: 16 touch sensitive keys
- output: 0 – 1V

Ordering information

- 01050100** GABI* y-HPLC-flow-detector with keyboard and display analog output 0-1V
- 01052001** GABI* scintillation probe 1x1" pinhole, 12 x 20mm
- 01052015** GABI* 30 mm lead shielding
- 01052002** GABI* flow cell 1x1" pinhole
- 01058004** y-reference source, 137Cs for 1x1"
- 01059025** GABI* scintillation probe 2x2" pinhole, 16 x 30mm
- 01059024** GABI* 50 mm lead shielding
- 01059023** GABI* flow cell for 2x2" pinhole
- 01059026** GABI* scintillation probe 3x3" pinhole, 16 x 40mm
- 01059028** GABI* 50 mm lead shielding
- 01059027** GABI* flow cell 3x3" pinhole
- 01058004** y-reference source, 137Cs for 2x2, 3x3"
- 01240074** installation and 1 day training





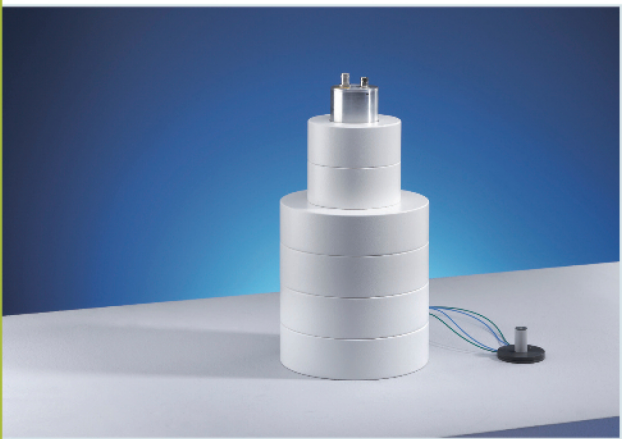
GABI

analog output Radioactivity-HPLC-flow-monitor

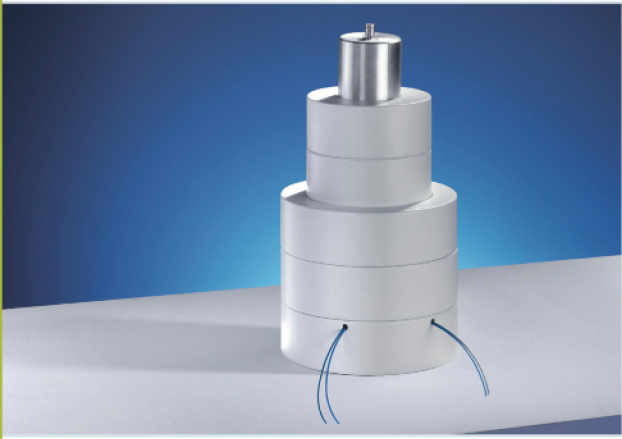
γ-Radiochromatography



1x1" NaI (Tl) scintillation probe with pin hole 8 mm diam.,
20 mm deep, 35 mm lead shielding



2x2" NaI (Tl) scintillation probe with pin hole 16mm diam,
30 mm deep, 50 mm lead shield



3x3" NaI (Tl) scintillation probe with pin hole 16 mm diam,
40 mm deep, 50 mm lead shield

Technical data

energy range: 10 – 2000 keV
 high voltage range: 500 – 2000 V
 count rate: 0 – 500.000 c/s
 data input: 7 analog input channels,
 -0.5 - + 4.5V
 resolution 21 bit

data output: RS232C,
 2 analog outputs 0-1V
 resolution 20 bit

Scintillation probes

NaI(Tl) size: 1x1"
 pin hole size: 12 mm diameter
 20 mm deep
 energy range: 10 – 60 keV
 typical nuclide: 125I
 shielding: 30 mm lead

NaI(Tl) size: 2x2"
 pin hole size: 16 mm diameter
 30 mm deep
 energy range: 60 -600 keV
 typical nuclide: 99mTc,131I, 18F
 shielding: 50 mm lead

NaI(Tl) size: 3x3"
 pin hole size: 16 mm diameter
 40 mm deep
 energy range: 600 – 2000 keV
 typical nuclide: Fe 59
 shielding: 50 mm lead

Sole Distributor in China and Hong Kong : NIKYANG Enterprise Limited

Hong Kong • 852-2569 2154
 Shanghai • 86-21 6351 1828
 info@nikyang.com

Guangzhou • 86-20 8329 2451
 Beijing • 86-10 6527 8522
 www.nikyang.com

